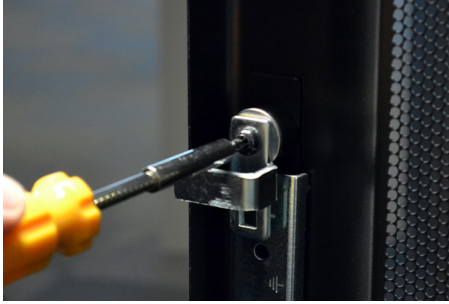


RAC2101 Installation

Single Door Installation:



1 Remove the cam arm from the existing lock. Set aside for later use.



2 Remove the rest of the existing lock.



3 Place an installer OneKEY into the IR port on the lock and press the button on the key.



4 The handle will pop up.



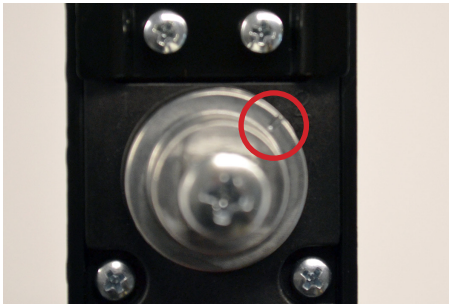
5 Place the shaft adaptor onto the back of the RAC Lock.



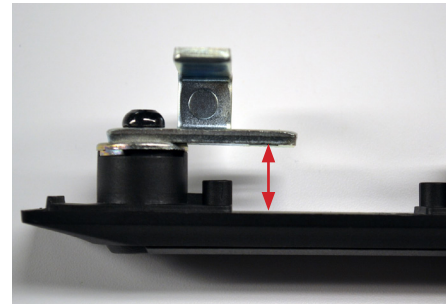
6a Determine which way the handle will turn. With the shaft adaptor in the position above, the handle will turn to the right.



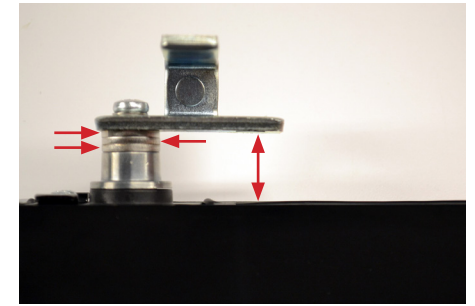
▶ RAC2101 Installation



6b Switch the shaft adapter to the position shown above for a handle to open to the left.



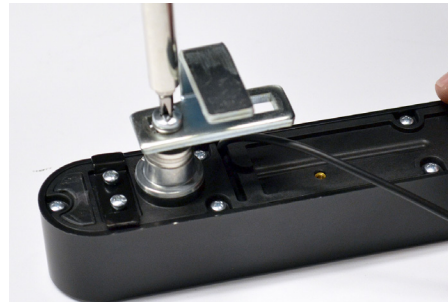
7a Observe the gap that existed between the lock body and cam arm on the existing lock.



7b Using the washers provided, recreate that gap on the RAC Lock being installed.



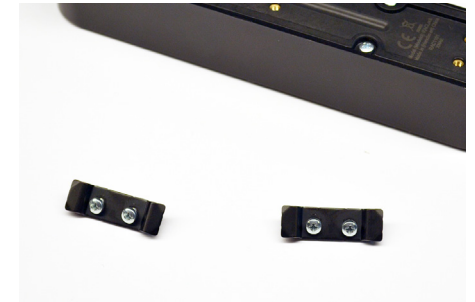
8 Place the washers onto the shaft.



9 Place the cam arm from the existing lock onto the shaft and secure with the provided screw.



10 Remove the 4 screws holding the 2 brackets on the back of the RAC Lock body.



11 Set the brackets and screws aside.

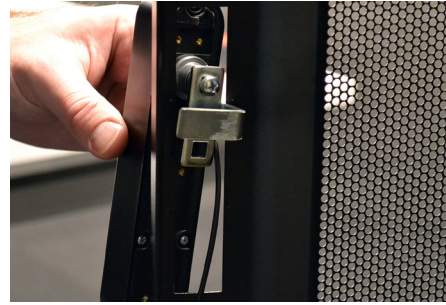
RAC2101 Installation



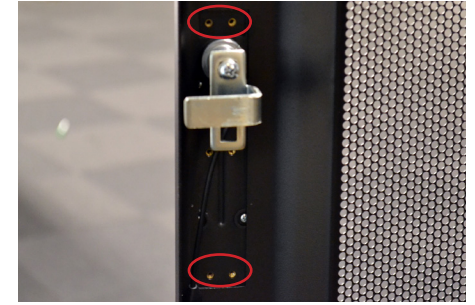
- 12** Peel the clear film from the 2 adhesives on the back of the RAC Lock.
Note: The adhesives are located at the top and bottom of the RAC Lock body.



- 13** Route the sensor cable through the opening in the server rack door.



- 14** Fit the cam arm through the opening in the door.



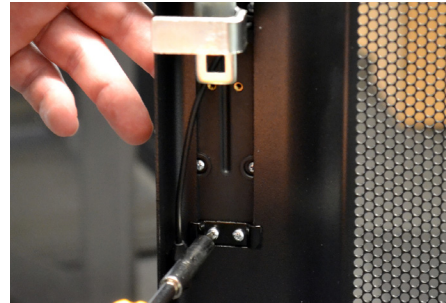
- 15** Align the RAC Lock body with the opening. Ensure that the copper inserts are visible at the top and bottom.



- 16** Press the RAC Lock body against the door.



- 17** Ensure that the screws are oriented in the bracket as shown above.



- 18** Align one of the brackets with the bottom screw inserts. Insert and tighten 2 of the screws to secure the bracket.



- 19** Repeat for the top bracket.

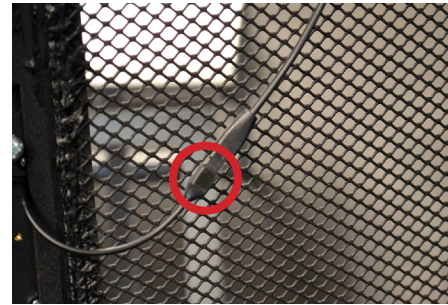
Sensor Installation:



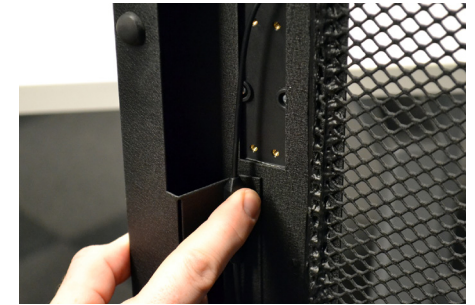
20 Test the turn of the handle. If not correct, refer to steps 6a & 6b of the single door installation instructions.



21 Ensure that the cam arm turns in the correct direction.



22 Connect the Sensor to the sensor cable on the RAC Lock body. Observe the small adhesive that is circled above.



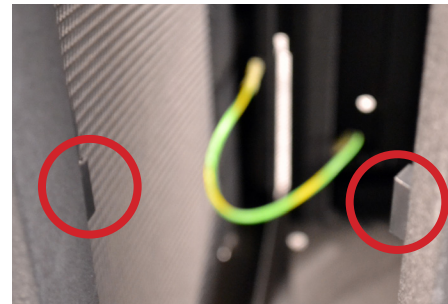
23 Remove the clear film on the adhesive and place the junction to hold the cable out of the way.
Note: Prior to application, use the provided alcohol wipe to clean the area where the sensor will be placed. Allow it to dry completely.



24a Determine a location to place the sensor. Find a flat place on the interior edge of the door. Ensure that the cable will not be in the way



24b Do NOT place the sensor where the cable will bunch up and prevent the door from opening and closing easily.



24c When determining the location of the sensor (and the magnet, steps 40-42), look for features that will make contact when the door is closed. In order for the RAC Lock to function properly the sensor and magnet will need to sit no more than 2-3mm from each other when the door is closed.

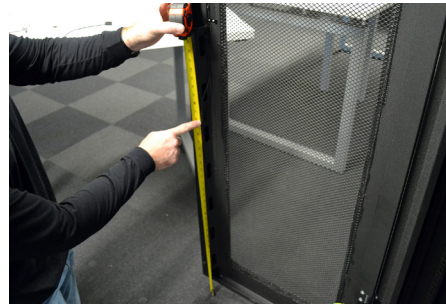


25 Peel the clear film from the adhesive on the sensor.

RAC2101 Installation



- 26** Position the sensor where previously determined and apply pressure for at least 10 seconds.
Note: Prior to application, use the provided alcohol wipe to clean the area where the sensor will be placed. Allow it to dry completely.



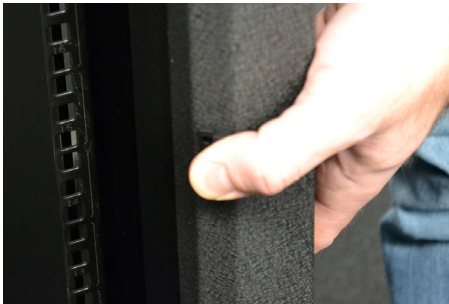
- 27** Note the location of the sensor using a tape measure.



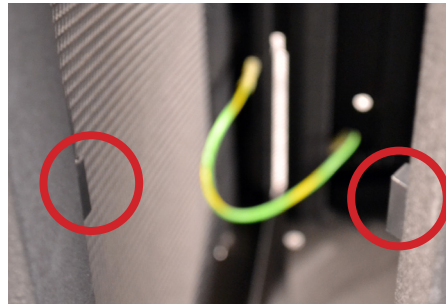
- 28** Mark the same position on the frame where the magnet will be placed.



- 29** Peel the clear film from the magnet.



- 30** Place the magnet in the where determined and apply pressure for at least 10 seconds.
Note: Prior to application, use the provided alcohol wipe to clean the area where the sensor will be placed. Allow it to dry completely.



- 31** Ensure that the sensor and magnet are aligned correctly and that no more than 3mm between the 2 when closed.

RAC2101 Installation

Double Door Installation:



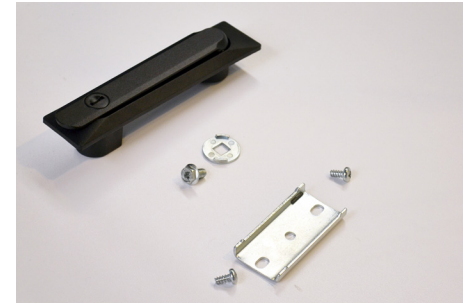
32 Place a clamp on the top of the swing bar to hold it in place.



33 Remove screw holding the cam arm to the old lock.



34 Position the cam arm and swing bar to the side. Remove the hardware and panel holding the old lock to the door.



35 Remove the lock and set aside.



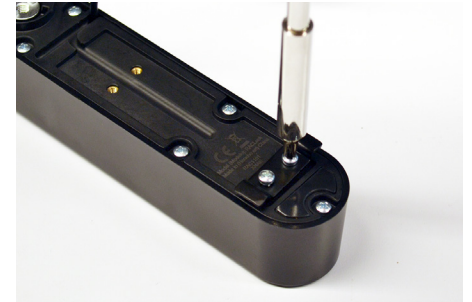
36 Place an installer OneKEY into the IR port on the lock and press the button on the key.



37 The handle will pop up.

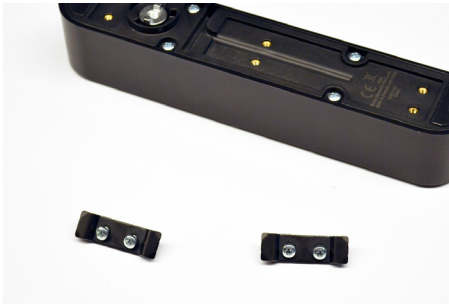


38 Remove the 2 screws holding the top bracket on the back of the RAC Lock body.



39 Remove the 2 screws holding the bottom bracket on the back of the RAC Lock body.

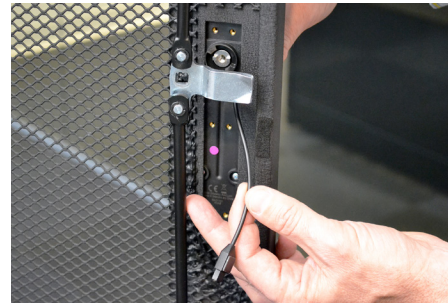
RAC2101 Installation



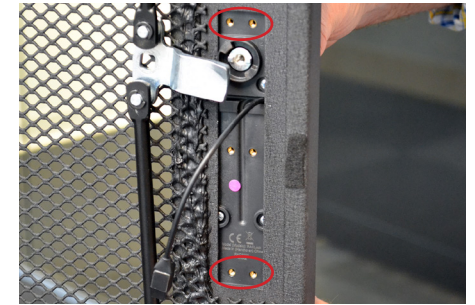
40 Set the brackets and screws aside.



41 Peel the clear film from the 2 adhesives on the back of the RAC Lock.
Note: The adhesives are located at the top and bottom of the RAC Lock body.



42 Route the sensor cable through the opening in the server rack door.



43 Align the RAC Lock body with the opening. Ensure that the copper inserts are visible at the top and bottom.



44 Press the RAC Lock body against the door.



45 Ensure that the screws are oriented in the bracket as shown above.



46 Align one of the brackets with the top screw inserts. Insert and tighten 2 of the screws to secure the bracket.



47 Repeat for the bottom bracket.

RAC2101 Installation



- 48 Place the shaft onto the lock body with the notch pointing away from the door edge.



- 49 Place as many spacers onto the shaft to still allow room for the cam arm.



- 50 Place the cam arm onto the shaft.



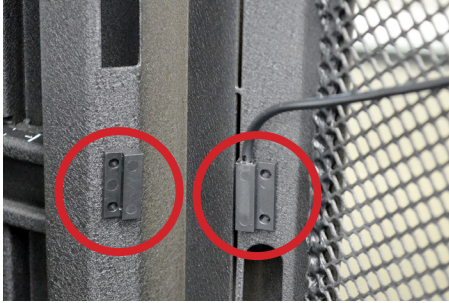
- 51 Secure the shaft with the provided screw.



- 52 Remove the clamp from the swing bar.

RAC2101 Installation

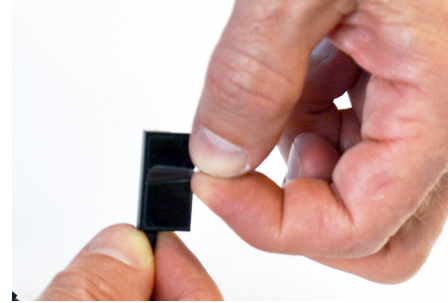
Sensor Installation:



- 53** When determining the placement of the magnetic sensors, find corresponding surfaces that, when the door is closed, the sensors will sit no more than 3mm apart. Note: The above image shows the sensors placed along the door hinge. **Note:** Prior to application, use the provided alcohol wipe to clean the area where the sensor will be placed. Allow it to dry completely.



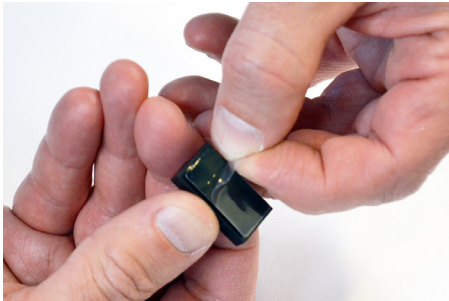
- 54** Plug the sensor cable into the cable on the back of the RAC Lock.



- 55** Peel the clear film from the magnet sensor.



- 56** Place the sensor where previously determined and apply pressure for at least 10 seconds.



- 57** Peel the clear film from the independent magnet sensor.



- 58** Place the sensor where previously determined so that it will sit in range of the other magnet sensor when the door is closed. Apply pressure for at least 10 seconds.



- 59** Peel the clear film from the adhesive on the RAC Lock cable.

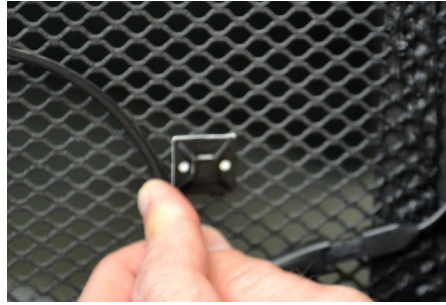


- 60** Position the cable so that it will be out of the way of the cam arm's action. Press the adhesive against the surface for at least 10 seconds.

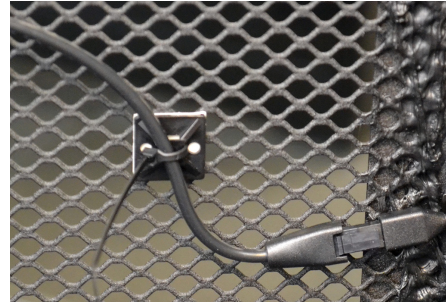
RAC2101 Installation



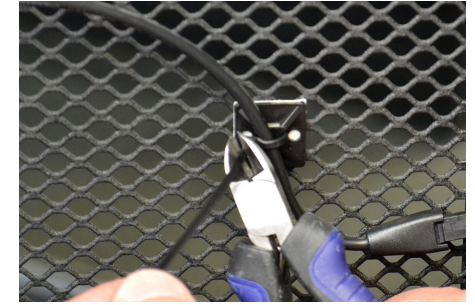
- 61** **Optional:** If there is excess sensor cable that may get caught, remove the backing from the adhesive on the provided cable anchor.
Note: Prior to application, use the provided alcohol wipe to clean the area where the sensor will be placed. Allow it to dry completely.



- 62** Place the cable anchor where you wish the cable to be positioned. Apply pressure for at least 10 seconds.



- 63** Place the cable over the cable anchor and secure with a zip-tie.



- 64** Trim excess material as desired.



- 65** Close the handle into the door and place an Installer OnKey into the port. Press the button on the OneKEY to lock the door.