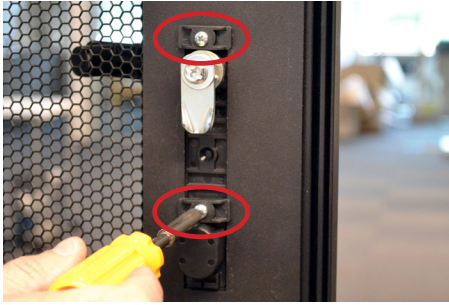


# RAC2201 Installation

## Single Door Installation:



1 Remove the 2 screws and brackets holding the existing lock to the door.



2 Remove the lock and the outer panel from the door. Set aside for later use.



3 Remove the 2 screws holding the top bracket on the back of the RAC Lock body.



4 Remove the 2 screws holding the bottom bracket on the back of the RAC Lock body.



5 Remove the brackets and screws from the RAC Lock and set aside.



6 Place an installer OneKEY into the IR port on the lock and press the button on the key.

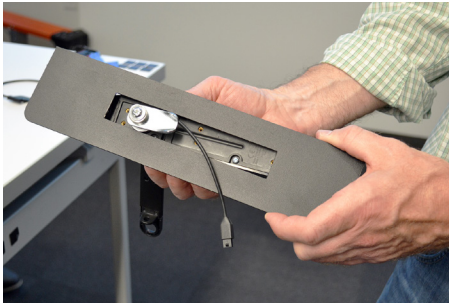


7 The handle will pop up.

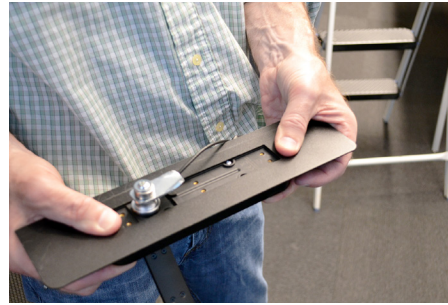


8 Peel the clear film from the 2 adhesives on the back of the RAC Lock.  
**Note:** The adhesives are located at the top and bottom of the RAC Lock body.

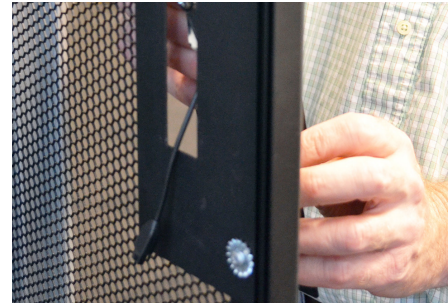
## RAC2201 Installation



- 9 Feed the cable through the hole in the cabinet's mounting plate (removed in step 2).  
**Note:** Do not install the cam arm at this point.



- 10 Align the RAC Lock with the hole so that the screw inserts on the RAC Lock are visible. Apply pressure for at least 10 seconds.



- 11 Feed the RAC Lock cable through the opening on the rack cabinet door.



- 12 Ensure that the screws are oriented in the bracket as shown above.



- 13 Align one of the brackets with the top screw inserts. Insert and tighten 2 of the screws to secure the bracket.



- 14 Repeat for the bottom bracket.

### Sensor Installation:



- 15 Place the cam arm onto the lock cylinder. Ensure that the scribe mark points away from the cam arm as shown.



- 16 Place the sensor arm over the cam arm.

## RAC2201 Installation



17 Place the 3 washers over the sensor arm.



18 Place the cam assembly onto the lock. Insert and tighten the screw.



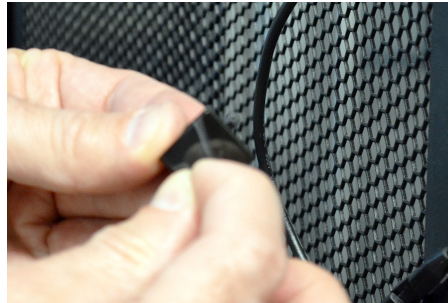
19 Connect the cable from the sensor arm to the cable from the RAC Lock.



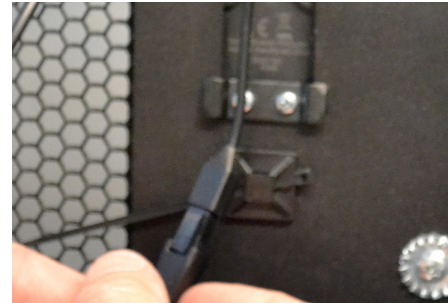
20 Peel the clear film from the adhesives on the cable connectors.



21 Place the cable connectors against the door panel so that the cables will not interfere with the lock action. Apply pressure for at least 10 seconds.



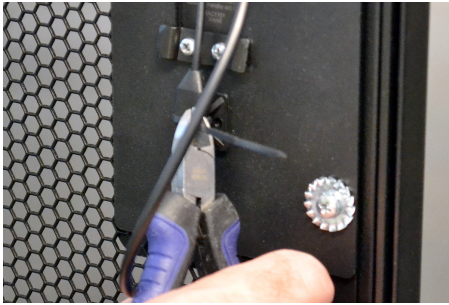
22 **Optional:** If there is excess sensor cable that may get caught, remove the backing from the adhesive on the provided cable anchor.  
**Note:** Prior to application, use the provided alcohol wipe to clean the area where the sensor will be placed. Allow it to dry completely.



23 Place the cable anchor where you wish the cable to be positioned. Apply pressure for at least 10 seconds.



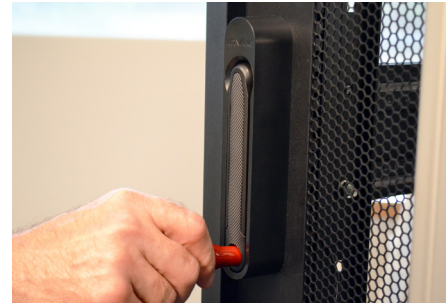
24 Place the cable over the cable anchor and secure with a zip-tie.



25 Trim excess material as desired.



26 Peel the clear film from the adhesive on the independent magnet sensor. Place it below the latch in the door frame as shown. Apply pressure for at least 10 seconds.



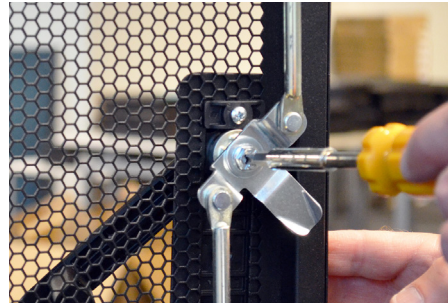
27 Close the handle into the door and place an Installer OnKey into the port. Press the button on the OneKEY to lock the door.

## RAC2201 Installation

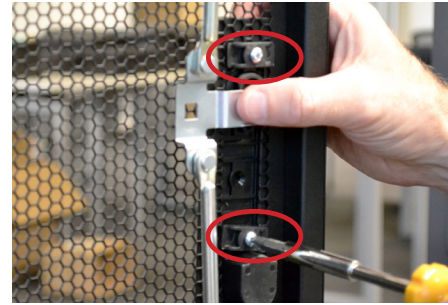
### Double Door Installation:



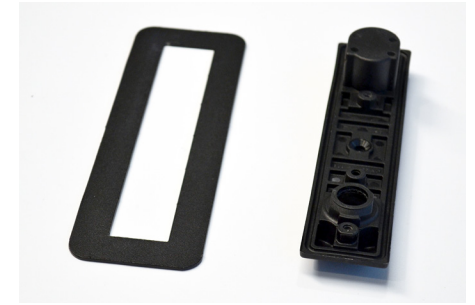
- 28 Place a clamp on the top of the swing bar to hold it in place.



- 29 Remove screw holding the cam arm to the old lock.



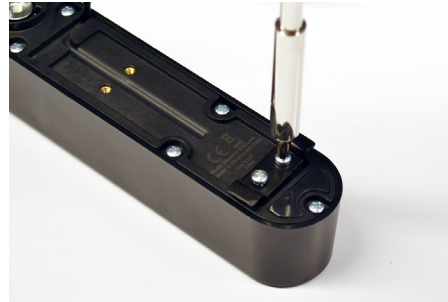
- 30 Position the cam arm and swing bar to the side. Remove the screws and brackets holding the old lock to the door.



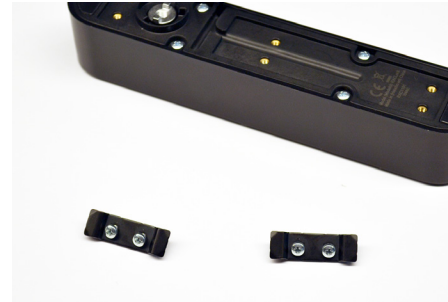
- 31 Remove the lock and mounting plate and set aside.



- 32 Remove the 2 screws holding the top bracket on the back of the RAC Lock body.



- 33 Remove the 2 screws holding the bottom bracket on the back of the RAC Lock body.



- 34 Set the brackets and screws aside.



- 35 Place an installer OneKEY into the IR port on the lock and press the button on the key.

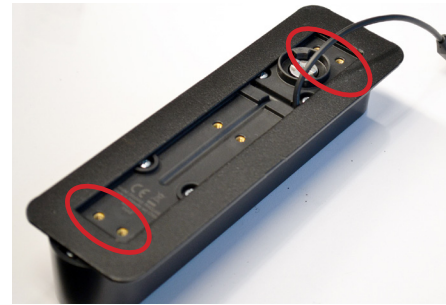
## RAC2201 Installation



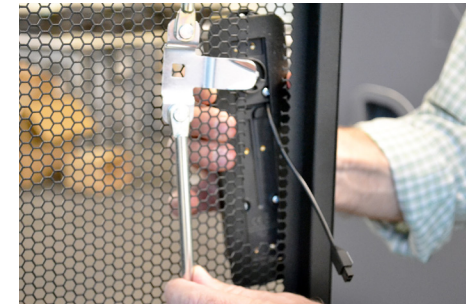
36 The handle will pop up.



37 Peel the clear film from the 2 adhesives on the back of the RAC Lock.  
**Note:** The adhesives are located at the top and bottom of the RAC Lock body.



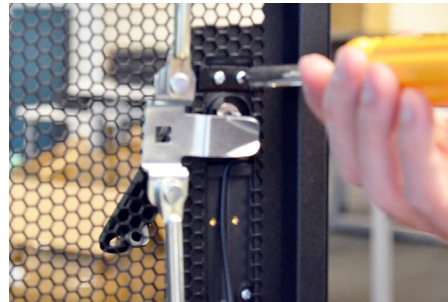
38 Place the mounting plate onto the back of the RAC Lock, with the cable coming through the opening in the plate. Ensure that RAC Lock is centered in the opening and that both sets of screw inserts are visible. Apply pressure for at least 10 seconds.



39 Route the sensor cable through the opening in the server rack door.



40 Ensure that the screws are oriented in the bracket as shown above.



41 Align one of the brackets with the top screw inserts. Insert and tighten 2 of the screws to secure the bracket.



42 Align the other bracket with the bottom screw inserts. Insert and tighten 2 of the screws to secure the bracket.



43 Place the 3 washers onto the cam shaft.



**44** Place the shaft onto the lock body with the notch pointing away from the door edge.



**45** Place the cam arm onto the shaft.



**46** Secure the shaft with the provided screw.



**47** Remove the clamp from the swing bar.

## Sensor Installation:



**48** Plug the sensor cable into the cable on the back of the RAC Lock.



**49** Peel the clear film from the adhesive on the RAC Lock cable.

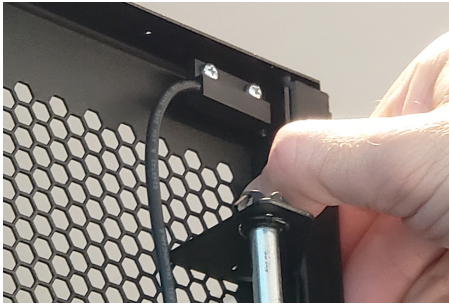


**50** Route the cable up the inner channel on the door panel. Press the cable junction into the channel for at least 10 seconds.



**51** Peel the clear film from the sensor bracket at the end of the sensor cable.

## RAC2201 Installation



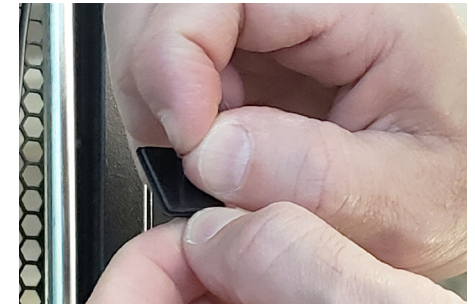
- 52** Fit the bracket up into the top corner of the door as shown. Press the adhesive against the inner door edge for at least 10 seconds.



- 53** Peel the clear film from the secondary door sensor.



- 54** Place the secondary bracket on the inside of the door panel, below the bracket that holds the swing bar. Apply pressure for at least 10 seconds.



- 55** **Optional:** If there is excess sensor cable that may get caught, remove the backing from the adhesive on the provided cable anchor.



- 56** Place the cable over the cable anchor and secure with a zip-tie.



- 57** Trim excess material as desired.



- 58** Remove the clear film from one of the independent magnet sensors and place it on the other door so that it will align with the secondary door sensor. Apply pressure for at least 10 seconds.



- 59** Remove the clear film from the other independent magnet sensors and place it at the top of the door frame so that it will align with the top sensor bracket sensor. Apply pressure for at least 10 seconds.





- 60 Close the handle into the door and place an Installer OnKey into the port. Press the button on the OneKEY to lock the door.